

case study

C40 acoustic flooring chosen for landmark development

Products used: **C40 cradle & batten flooring**
41,000m²

Developer: **Berkeley Homes**

Architects: **Rolfe Judd Architecture**

Main contractor: **Morrisroe**

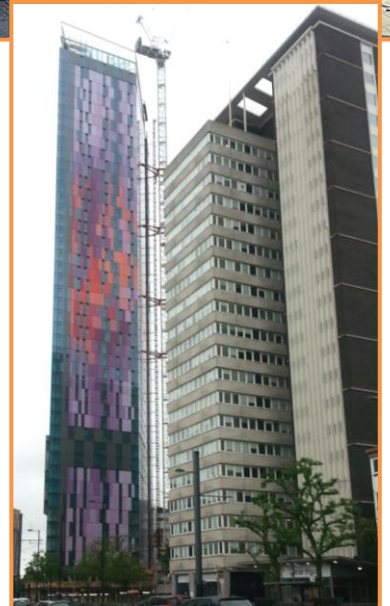
Flooring contractor: **InstaCoustic**

Part of the Croydon Vision 2020 regeneration programme, Saffron Square is a major new mixed use development incorporating a landmark 43 storey tower with multi-coloured exterior lighting, six different low rise blocks and a landscaped public square flanked by cafes, bars and shops. On the ground and part of the first floors are commercial units above which are 738 residential studios and apartments of varying sizes.



Specified for use throughout the residential units, was InstaCoustic's C40 cradle and batten acoustic flooring. Won in open tender based on price and quality, C40 flooring was chosen because it is a raised floor system that can be laser levelled on site to provide a perfectly level floor surface, while it also exceeded the acoustic requirements of Building Regulations Document E.

Furthermore, by using the C40 cradle and batten system no concrete screeding was required, reducing building weight and lorry movements and eliminating drying times. The environmentally friendly rubber crumb cradles are made from recycled tyre rubber and at Saffron Square enough were used to prevent over 13,000 car tyres going to landfill.



- Rubber crumb cradles have a 60 year guarantee
- Fully recyclable, genuine 'cradle-to-cradle' product
- Adjustable to produce varying floor heights
- System overcomes uneven sub-surfaces
- On-site levelling
- Excellent acoustic performance



In total, over 41,000m² of C40 flooring was installed by InstaCoustic supply and fix teams, recognised for their high standards of work and their co-ordination and interaction with other on-site trades. The teams also had an excellent health and safety record, regularly topping the OHSE league table and maintaining a top four position throughout the four years on site.

CS110