



INNOV8 FLOORS

LINO - DL

Creative Designs

Linoleum is a proven natural floor, consisting of linseed oil, pine resin, limestone, cork sawdust and natural earth-tone colors, until now limited by its design possibilities. Through an innovative formula, we have developed a totally dimensionally stable linoleum floor.

Lino-DL combines this natural product with the possibilities of digital printing, creating the ideal floor for residential and commercial projects. A very durable floor with limitless designs and natural properties.

It can be installed using the Click System on Instalay 30LG / DryBack on Instalay 25HG or alternatively can be supplied with our **MAGNAFLOOR** magnetic backing to be installed direct to metal raised access flooring or floating on Ezy-Install magnetic flooringunderlay.

Advantages of Lino-DL

NATURAL PRODUCT



INNOV8FLOORS Lino-DL is manufactured from natural and predominantly renewable raw materials (linseed oil/pine resin/limestone/cork wood flour / earth colours). The natural composition creates a sustainable and contemporary floor suitable for residential and commercial environments.

INFINITE DESIGNS



Originally linoleum was considered to be limited in its design possibilities – Lino-DL combines the natural properties of linoleum with digital printing enabling almost any design to be created – there are no limits to creativity. The light fastness of the prints is 7/8 with in the scale of 1-8.

DURABLE COATING WITH EMBOSSED SURFACE FINISH



A special anti-scratch coating is applied with the additional option of surface embossing. The surface not only provides a robust (Class 33) finish but provides an authentic structure and optical effect.

ELASTICITY AND THERMAL INSULATION



Due to the pressed cork backing and the linoleum composite layer Lino-DL floors are particularly suitable for areas that require a reduction in sound and increased thermal properties, due to the high thermal insulation properties and sound reduction of 17dB.



Domestic Class 23



Commercial Class 33



Lightfast 7 / 8



Embossing



Easy Maintenance



Sound impact



Use of Natural Raw Materials



Soft to walk on



1226



1224



1229



0974



1024



1025



1230



1228



1227



1225



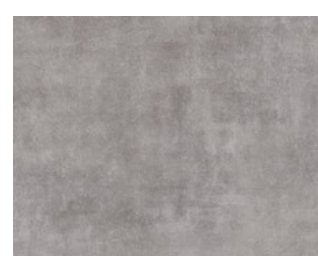
1231



1235



1234



1232



1233

INNOV FLO8RS

In partnership with
InstaFloor®

SUPPORTING YOUR WORLD

Insta House
Ivanhoe Road
Hogwood Business Park
Wokingham
RG40 4PZ

Tel: +44(0)118 973 9560

Email: sales@instafloor.co.ukWeb: www.instafloor.co.uk

mAGNAFLOOR®



CLASS 23 / 33



NATURAL PRODUCT



LIGHTFAST 7 / 8



EMBOSSING



EASY TO CARE



HDF - Click System | 10mm

- 1 Resilient Anti-Scratch Coating
- 2 Lightfast Digital Print
- 3 Linoleum Composite
- 4 Moisture Resistant HDF
- 5 Cork backing



Click System

For installation using Instalay 30LG underlay



Dry Back | 4mm

- 1 Resilient Anti-Scratch Coating
- 2 Lightfast Digital Print
- 3 Linoleum Composite
- 4 Cork Composite >600kg/m3

For installation using Instalay 25HG underlay

Also available as **mAGNAFLOOR®** with our unique magnetic backing

For installation direct to metal raised access floors

For installation using Ezy-Install magnetic flooring underlay

Dimensions

620 x 390 mm

1235 x 200 mm



Thermal insulation



Sound Impact Insulation



Use of natural fast growing raw material



Infinite Designs



Warm to the touch



Soft to walk on

